



# すうじをおぼえよう

ゆびをつかったかぞえかた(ばんごうなし)

なまえ



1

いち



2

に



3

さん



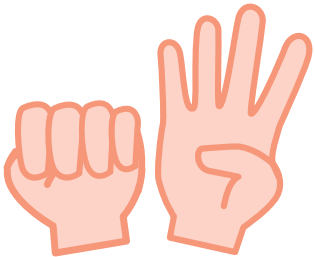
4

し よん



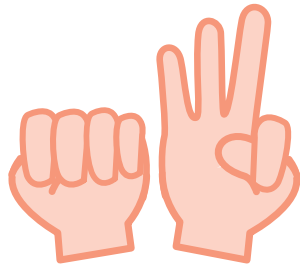
5

ご



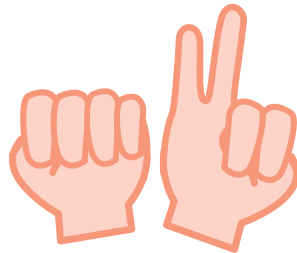
6

ろく



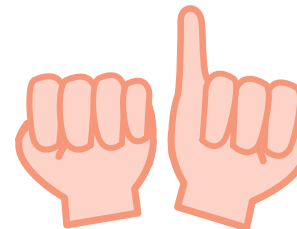
7

しち なな



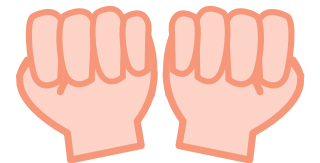
8

はち



9

く きゅう



10

じゅう



# すうじをおぼえよう

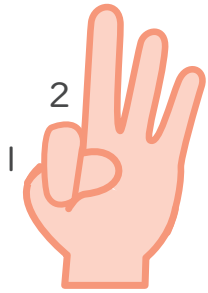
ゆびをつかったかぞえかた(ばんごうあり)

なまえ



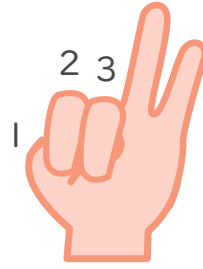
1

いち



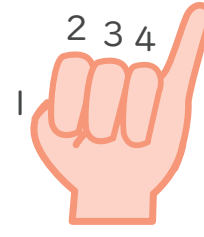
2

に



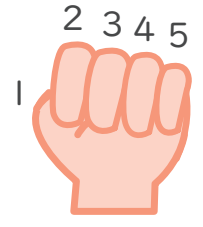
3

さん



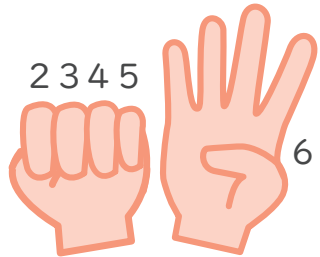
4

し よん



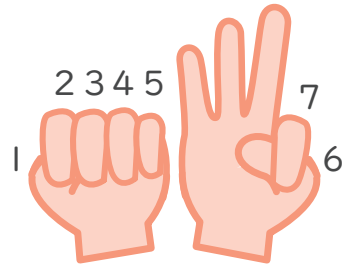
5

ご



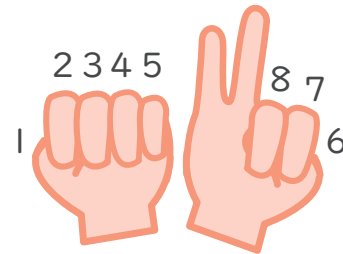
6

ろく



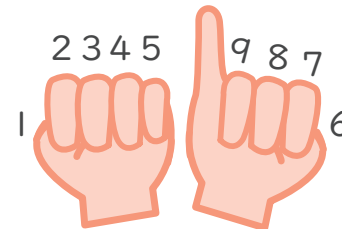
7

しち なな



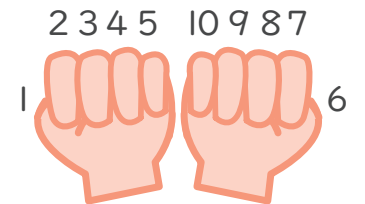
8

はち



9

く きゅう



10

じゅう